

# MANWEB 'make a speech' COMPETITION

2nd FEBRUARY, 1961

**MEN**  
1st Prize £10  
2nd Prize £5

**WOMEN**  
1st Prize £10  
2nd Prize £5

**Even if you don't win...you can't lose!**

Winners proceed into  
the National E.D.A. Competition

One day whether you like it or not you'll be asked 'to say a few words'! It happens at weddings, at the club, if you win some prize. Here's a chance to practise on strangers, so why not have a go.

And remember, the man or woman who can make a bit of a speech is the sort who gets on!

Closing Date for entries:  
1st DECEMBER, 1960



You can learn all about the Area and National Competitions and pick up some valuable tips by getting a copy of the E.D.A. booklet 'Public Speaking is Great Fun' from your District Manager's Office, District Commercial Engineer, or fill in this coupon:

To: MANWEB · LOVE LANE · LIVERPOOL 3

Please send me details of the "Make-A-Speech" Competition.

NAME .....

ADDRESS .....

PUBLISHED BY  
THE MERSEYSIDE AND NORTH WALES ELECTRICITY BOARD,  
ELECTRICITY HOUSE, LOVE LANE, PALL MALL, LIVERPOOL 3  
PRINTED BY LIVERPOOL LETTERPRESS LIMITED, 29-35 SEEL STREET, LIVERPOOL



October  
1960

The Staff Magazine  
of the  
Merseyside and North Wales  
Electricity Board

# Contact

FIRST DAY AT WORK (See page 270)



## MATTERS OF RECORD

### MANWEB REPORT AND ACCOUNTS FOR 1959-60

The Merseyside and North Wales Electricity Board's twelfth Annual Report, for the financial year which ended on 31st March, 1960, describes a year of continuing expansion in the provision of the Board's services. The distribution network was extended and improved, and more electricity and electrical appliances were sold than in any previous year.

The number of consumers increased by nearly 21,000 to over 926,000, the year's increase including more than 17,700 houses and flats, and 1,660 farms.

The simultaneous maximum demand made by consumers was a record for Merseyside and North Wales, being 1,293,925 kilowatts compared with 1,211,190 kilowatts in 1958-59. Over five and a half thousand million units of electricity were sold (a record number for the Area and an increase of 495 millions over the previous year) and the average unit price was less than in 1958-59 (1.391d. compared with 1.415d.). Distribution costs per unit sold were kept below those of any of the previous eleven years.

#### ELECTRICITY IN INDUSTRY

Industrial consumers took an increased proportion of the electricity sold—they used 3,138 million units (56.5% of the total). This was 366 million units more than in 1958-59, when industrial use accounted for 54.8% of the total output. Sales of electricity to domestic consumers (1,527 million units compared with 1,417 millions in 1958-59), were 27.5% of the total sales. The year's average use of electricity in houses and flats was 1,907 units compared with 1,807 in the previous year and with less than 1,200 in 1948-49, the Board's first year.

The Board's capital expenditure in the year was £6½ million, including over £6 million spent on extending and reinforcing the distribution network, in which 965 miles of new mains and 2,280 new transforming points were put into use. The Report describes some of the network improvements and extensions carried out in many parts of the Area and also refers particularly to the industrial uses for the new supplies provided, or to be provided, from the developing network.

The Accounts published with the Report show that the income of £37,000,000 included £32,200,000 from the sale of electricity and nearly £4,300,000 from installation work and the sale of electrical appliances. The amount (£1,426,733) by which gross income exceeded expenditure is equivalent to a return of slightly less than 4% on the capital employed during the year—and includes a net income of £413,953 which resulted from appliance sales and installation work.

#### APPLIANCE SALES BOOM

The value of the year's sales of electrical appliances (nearly £3,300,000) was a new record by a wide margin—it was over 50% more than in 1958-59. Sales of cookers and water heaters were more than in any previous year and vacuum cleaners were in great demand, but the biggest rate of increase was in refrigerators and washing machines. Nearly two-and-a-half times as many refrigerators were sold in 1959-60 compared with 1958-59, and the increase in sales of washing machines was almost 70%.

The full Report, including the Board's Accounts and the Annual Report of the Area Electricity Consultative Council, is on sale at branches of Her Majesty's Stationery Office but the Board have published a summary which is obtainable free of charge on request at any of their offices or Service Centres.



# Contact

THE STAFF MAGAZINE OF THE  
MERSEYSIDE AND NORTH WALES ELECTRICITY BOARD

Edited by Keith Baldwin, and published monthly  
from the Board's Headquarters, Love Lane,  
Pall Mall, Liverpool 3. Telephone NORth 2681

The opinions and comments expressed in articles and monographs published in *Contact* are not necessarily, those of the Editor or the Board.

VOL. 12

OCTOBER, 1960

No. 10

#### EDITORIAL

## You can be Proud

Never, since the Board took over responsibility for distributing electricity throughout Merseyside and North Wales, have such striking results been achieved as in the year which ended on March 31st, 1960.

*New records in sales of electricity and numbers of consumers are now taken as an annual matter of course. These are inevitable in an expanding industry, but when one considers that the average price of each unit sold was lower than in the previous year, that sales of domestic appliances rose in value by more than 50%, and that the Board's accounts show a surplus of nearly one-and-a-half million pounds, we can consider the year successful on every count!*

The dramatic increase in the sales of domestic appliances was largely attributable to the temporary abolition of hire purchase restrictions at the end of 1958, but it is also striking evidence of the fact that the homes of Britain are "going electric" just as fast as the people who live in them can arrange it.

#### Facts at your fingertips

As far as consumption of electricity is concerned, industry again took the lion's share, and here also the switchover to electrical power goes on apace.

On the opposite page we publish a highly condensed summary of the facts and figures for the year, as disclosed in the Annual Report and Accounts. In addition, every employee will by now have received a copy of the summary of the Report, which has been printed in both English and Welsh, for staff and members of the public, and the document tells a story which does credit to every member of the Manweb team.

**Read it, and make yourself familiar with its contents. This account of a year of success and service by a publicly-owned industry can only serve to increase public confidence in Manweb, and thus pave the way for fresh achievements in the future.**



A happy group of "fettlers and spongers" break from their work to pose for our photographer.

## AN ELECTRICAL POTTERY

Most people, when they return from holiday, take back home with them gifts and souvenirs for their relatives and friends. And these presents very often take the shape of china ornaments, or models of such animals as horses, elephants and fawns.

At Winsford, in the heart of Cheshire, is an interesting pottery works which, aided by electricity, has expanded from a very modest beginning seven years ago to a thriving present-day enterprise.

After an initial unsuccessful venture at Middlewich, Mrs. F. M. Dutton moved to Station Road, Winsford, in 1953, and once more started from scratch. One of her first jobs consisted of making and decorating beakers for the Coronation celebrations. Making full use of a small second-hand kiln, she went

A team of paintresses at work on the models.



on to produce a series of animal figures, and began taking on staff to help with the painting and packing. In this way an activity which started virtually as a hobby has grown into a business employing 26 people, who turn out some 5,000 pieces each week.

One of the two male members of Mrs. Dutton's staff is the moulder and it is his job to make the master mould and the repetition moulds. Next comes the casting operation, in which liquid clay is poured into the moulds.

### The Finishing Processes

When the clay is set, the mould is parted and the clay figure is removed. Where the two halves are joined a ridge of clay protrudes from the model and this has to be smoothed off. Into the picture at this stage come the "What's my Line" team of "Fettlers and Spongers", whose job it is to trim these edges. The models are then placed into an electric kiln where the temperature is raised to 700° centigrade, so hardening them ready for painting. A spray with the airograph gun, followed by a dipping in the glaze-tub (liquid glass) makes them ready for packing into another kiln, where the temperature is raised to 1,100° centigrade to fuse the liquid glass with the colour, and so complete the model.

Mrs. Dutton is full of praise for the latest electric kiln which was installed by our Northwich District staff recently. Its efficiency is such that the whole operation of packing, heating to the required temperature, and emptying, can be completed in 24 hours. There are now four electric kilns installed at the works, with a total load of 66 kW.



The final process. Emptying the electric kiln after the models have baked at 1,100 degrees Centigrade.



And so on to another model. The moulder is seen here preparing the next job.



# TALKING NOTES



## LEARNING IN FRANCE

A fascinating and educational visit to France is described by **Apprentice Electrical Fitter S. W. J. McCready**, of No. 3 Sub-Area, who was among a party of apprentices who stayed in that country as guests of Electricité de France from July 8th to 23rd.

In his report he describes the party's journey from London, via Folkestone and Boulogne, to Paris, and thence to Lyons.

At Lyons they were met by members of the staff of La Perolliere, the national training school, which is located at St. Pierre-le-Plaud, about 20 miles from the city. This was to be their headquarters during the visit.

Visits to factories producing switchgear and water turbines in Grenoble followed, and a couple of days later the party set out on a tour of the various hydro-electric stations in the French Alpine regions. A highlight of this trip, for some of the boys, was a couple of hours spent boating on Lake Annecy.

Visits to other works and electrical points of interest were included in the stay, while a couple of days in Paris, with visits to the Palace of Versailles and a cruise on the Seine, rounded off a memorable two weeks in France.

### A "Contact" Echo

It was a strange coincidence when **Mrs. D. W. Jones** (Typing Pool Supervisor, No. 4 Sub-Area), on holiday in Norfolk, visited the Holkham Hall Pottery shop and heard a gentleman addressed as 'Mr. Corrigan'. Remembering an item in *Contact* reporting that a retired employee of

that name was living in the area, Mrs. Jones enquired whether he was in fact the same **Mr. Corrigan**. He was, and expressed his delight in meeting someone from Manweb. A long and interesting chat followed during which Mr. Corrigan asked to be remembered to his many friends at the Board, and extended a welcome to any employee who may be passing The Barnacles, Wells-next-the-Sea, to call and have a cup of tea. Next year he hopes to have a boat, and callers may find themselves enjoying a sea trip with Mr. Corrigan at the helm.

**Mrs. D. W. Jones.**



Although officially retired, Mr. Corrigan still finds plenty to keep him busy. Part of the day he spends looking after the



**Mr. J. G. Corrigan.**

customers in the shop and for the rest of the time he keeps the electrical installations in the factory up to scratch. He is obviously very happy and contented, but misses all his friends from the North.

### Cup Winners

The football team from No. 4 Sub-Area office visited Rhyl on September 1st to play in the final of the Nalگو North Wales

Cup competition. They ran out worthy winners, beating the Rhyl U.D.C. team by two goals to one.

It was a hard game with a dour defensive battle during the first half. Mid-way through the second half **Hubert Phillips** headed a neat goal from a corner taken by **Ray Williams**. A minute later **Peter Williams** netted a second goal for the visitors. The Rhyl team fought back to score and reduce the lead with 20 minutes to go. Strong defensive play held the Rhyl forwards, and after a few anxious moments, the final whistle blew with No. 4 Sub-Area the winners of the trophy for the third successive year.

After the match both teams were entertained at a Rhyl hotel where the trophy was presented to the team captain **Elfed Roberts**, by Mr. E. A. Chesworth, Chairman of the North Wales District Sub-Committee of Nalگو.

The winning team proudly display their trophy. On the picture are **Peter Williams, Elfed Roberts, Graham Davies, Adrian Maloney, Eric Edwards, John Edwards, Ray Williams, Hubert Phillips, John Hughes, and Carol Clarke**. The eleventh member of the team, who could not be present for the picture, was **Dave Fairhurst**.



### Words of thanks

Contact has received the following letter from **Mr. W. Gilchrist**, the Board's former Chief Commercial Officer, whose retirement was reported in the September number.

*"Ploughfield Cottage,  
West Wittering,  
West Sussex.*

*"My wife and I wish to convey our very sincere thanks to all members of the Mamweb team who expressed their good wishes to us on my retirement by giving us such beautiful presents. Many of my friends were not able to attend my farewell functions, and to those particularly I wish to return thanks.*

*"We look forward to hearing of the continuing successful progress of Mamweb through 'Contact', and wish the Board every success in the future."*

### Llandudno Winners

The Board's Conway Valley District achieved the best result in a recent Hoover Sales Contest, with 87.1% of their target figure, and thus gain the Sub-Ar a prize. Leading Districts in the Board's other Sub-Areas were Liverpool North, Northwich, and Chester, though in the overall placings Districts within No. 4 Sub-Area occupied four of the top five positions.

Members of the District staff enjoyed a dinner and theatre evening subsequently, in celebration of their success.



The Board's latest student apprentice recruits. *Left to right, back row:* Messrs. R. C. Johnson, A. G. Acton, A. D. C. Pharaoh, D. J. Jeffcoate, B. W. Acton and M. C. Owen. *Front row:* Messrs. S. A. Jackson, T. J. Owen, B. Quigg, R. S. Brown and R. G. Shackle.

### Presentation Ceremonies

Shields won by Bethesda and Aberystwyth Service Centres in this year's Spring Window Display Competition were presented recently. On the right Mr. E. M. Morris, of Aberystwyth Service Centre, receives the shield from Mr. I. Griffiths, District Commercial Engineer, while, below, Mr. E. Jones, of Bethesda, is presented with his Service Centre's shield by Mr. F. Jones, vice-Chairman of No. 7B Works and LAC Committees, in the presence of Mr. E. W. Griffiths, District Manager, Caernarvon.



## STUDENTS and SPORTSMEN

Some of the contestants at the Electrical Industries Benevolent Association's National Golf Tournament area competition, held at Prenton Golf Club recently. Included in this group (*second, third and fourth from left*) are Messrs. W. B. Parkinson (Chief Commercial Officer), F. J. Brown (Assistant Chief Engineer—Planning) and W. Wallwork (Senior Assistant Commercial Engineer, No. 1 Sub-Area).



## WEDDINGS

### FOZARD—BOOTH

Congratulations to Miss Ann Booth of the Machine Section, No. 3 Sub-Area, who was married to Mr. Brian Fozard recently.



Mrs. and Mrs. Fozard.

Mr. Fozard was formerly a member of the Accounts Staff at Chester. He is now a teacher at Brighton, where he and his wife will live.

### RODEN—WEST

Best wishes for the future to Miss Margaret West of No. 4 Sub-Area Secretarial department who was married to Mr. Goronwy Roden at St.



Mr. and Mrs. Roden.

Francis of Assisi Church, Llay, on September 3rd. Mr. R. M. Broadfoot (Sub-Area Secretary) presented her with various gifts from her colleagues.

### RYDER—REID

Congratulations to Miss Brenda Reid of No. 4 Sub-Area Revenue department who was married to Mr. Donald Ryder at Holy Trinity Church, Rhostyllen. On behalf of her colleagues, Mr. J. Naylor (Revenue Superintendent) presented her with an electric kettle.

### VICKERS—WINDSOR

Best wishes for the future to Miss Mary Windsor of No. 3 Sub-Area



Mr. and Mrs. Vickers.

Machine Section, on her marriage to Mr. Miles Vickers of Bunbury, near Chester.

### ROBERTS—WILLIAMS



Mr. Gwyn Roberts and Miss Gladwyn Williams (see report in last month's Contact).

### MULLALY—PIPER



Mr. P. Mullaly and Miss F. Piper (see report in last month's Contact).

### NICHOLLS—WILLIAMS

Best wishes to Miss Ann Williams, a member of the staff at Wrexham Service Centre, who was married to Mr. John Nicholls at St. Mary's



Mr. and Mrs. Nicholls.

Church, Johnstown, Wrexham, on September 3rd. On behalf of her colleagues she was presented with an electric kettle.

### JONES—JONES

The good wishes of her many friends in No. 4 Sub-Area go with Miss Joyce Jones, demonstrator at Wrexham District, who was married to Mr. Michael Jones, of Aberdare, on September 17th. On behalf of her colleagues she was presented with a steam iron, a fish fryer, and a skillet.

Joyce, a former winner of the EDA public speaking contest, has now left the Board's service and has gone to live at Llandeilo, South Wales.

## SOCIAL OCCASIONS

### No. 4 Sub-Area DINNER AND DANCE

MEMORIAL HALL,  
WREXHAM

Friday, November 18th

8 p.m. — 1 a.m.

Billy Gibbons and His  
Orchestra

Tickets . . . . . 15/-

### THE EVENT OF THE YEAR

### ANNUAL SUPPER DANCE

at the

Exchange Hotel, Liverpool

on

FRIDAY, NOVEMBER 11th, 1960

Dancing — 8 p.m. to 1 a.m.

Tickets: £1.1.0

Obtainable from:

No. 1 Sub-Area—Mr. Helliwell

No. 2 Sub-Area—Mr. Harling

No. 3 Sub-Area—Mr. Kellett

No. 4 Sub-Area—Mr. Pegg

Table bookings can be arranged by contacting Mr. T. H. Dutton, Establishments Department, Love Lane.

### H.Q. Sports and Social Club HALLOWE'EN DANCE and BEETLE DRIVE

Monday, 31st October, 1960

7.30 p.m. — 11 p.m.

Refreshments Provided

Tickets (1/-) from Mr. Cooksley  
Accounts, Love Lane.

### ENGAGEMENT

Congratulations to Mr. Duncan Brimble, of the Accounts Staff at Board Headquarters, who recently became engaged to Miss Anne Harrison, of Thornton, near Liverpool.



A group of "new boys" from this year's intake at Hoylake.

## NEWCOMERS TO HOYLAKE

A record intake of 106 boys, former pupils of schools in all parts of the Manweb area, reported at the Board's Hoylake Training School for their first day "at work" on September 5th.

By the time these notes appear in print all the lads will have passed through the transitional stage between their schooldays and their working lives. At Hoylake this is not really a very difficult process because, in a way, they have gone "back to school". As Manweb apprentices they will spend the first ten months of their careers at the training school, learning the tricks of their chosen trades.

*For some days before the reception of the fifth intake, Mr. R. Slack and his staff were busily engaged in ensuring that the metal files were in tip-top condition, and that an adequate supply of steel bars and hacksaws was available for the first day in the workshops. Experience has taught them that these instruments are invaluable as aids to maintaining school discipline. An hour or two spent sawing and filing makes the most unruly student into a more reasonable sort of chap!*

*The first day of the new term started just before eight in the morning, when the local boys arrived. A couple of hours later the hubbub of chatter, the*

*whirr of lathes and the rasping of files on metal had turned the building into a babel of noise—only an occasional instructor's command could be heard above the general din.*

When things become a little more settled a microphone call system will come into use when announcements have to be made. This apparatus is installed on a new inspection bench which has been fitted up in the middle of the workshop, while other new pieces of equipment include an electric arc-welding plant, a forge, and a case-hardening furnace—(every intake contains at least one hard case!)

*(continued overleaf)*

A group of boys from Southport District pose for a picture in the workshops.  
Left to right: Frank Corrin, Keith Fitton, Alan Greaves, Harry Cooper and Ian Wright.



## NEWCOMERS TO HOYLAKE

with. These two boys had come up by road, driven by Alun's father.

Sixty-two of the boys, whose homes are beyond daily travelling distance, have been found comfortable "digs" locally with the now-famous Hoylake landladies. Messrs. W. A. Gibson and T. H. Dutton, of the Establishments Department at Board Headquarters,

their first sit back and reflect on their first day on the job. We hope they didn't find it too tough, and we welcome them all to the Manweb staff.

**OUR COVER PICTURE** shows a group of apprentices arriving at the Training Centre.

Hoylake's 'headmaster' Mr. R. Slack (*left*) greets Mr. and Mrs. D. E. Davies who have travelled from Bryncreg accompanying their son Alun (*right*) and his friend Michael Jones.



A group of Cheshire boys admiring the tools made by last year's apprentices. *Left to right:* John Harrison, Peter Farrington, David Condliffe, David Brookshaw and Alan Dickinson.

## New jobs—and new homes

Mr. W. A. Gibson (Assistant Establishments Officer) (*second left*) and his colleague, Mr. T. H. Dutton (*right*), introduce four apprentices to their landlady for the next ten months, Mrs. P. Swaine.







Varnish-making the old way. The resin was stirred in this type of cauldron, heated by gas jets sunk into the floor.

## **“Witchcraft in Industry”**

The Varnish-Maker's Art brought up-to-date

Since the 17th century the making of varnish has been regarded as an industrial art, and as recently as forty years ago the varnish maker was a law unto himself, with his own methods of cooking varnish and his own secret recipes. The cooking department was (and still is) called “the kitchen” and the cooking vessels are known as “pots”. Much has changed, of course, since those days and varnish formulation and manufacture have gradually become a technical and scientific business employing skilled technologists and plant operators. New developments and products have transformed the industry, which is now entering the push-button era.

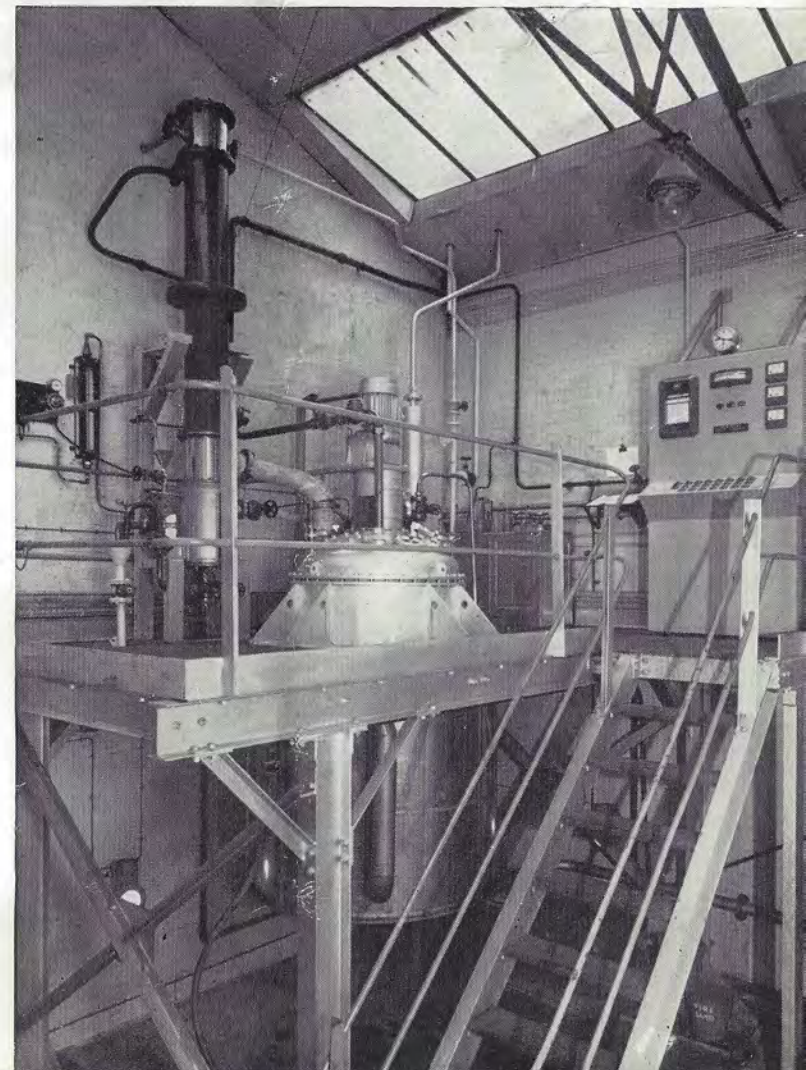
It may not be generally realised that every tin of paint contains varnish as one of its major ingredients, and that up to 60% of the paint may consist of varnish. The quantity of varnish produced by the paint industry for its own use is, therefore, substantial.

Varnish manufacture is essentially the heat treatment of a complex mixture of resins and vegetable oils at temperatures of up to 650°F, and the subsequent introduction of various types of solvents and thinners into this hot base mixture. Early resins used were natural materials obtained from the ground in a fossilised

state, or from the sap of living trees, and indeed, some of these resins are still in use to the present day.

Synthetic resins have gradually taken the place of these natural products and the vast majority of present day paints sold in the shops are based on synthetic resin. Over the years manufacturers have sought to develop varnishes with better colour, faster drying times, better weather resistance, and easier brushing properties. This has involved closer control over the conditions of manufacture, and present-day varnish-making can involve chemical engineering techniques.

The modern way. This electrically heated “pot”, recently installed at Messrs. Davison's varnish works at Bootle, gives complete accuracy of control in the “cooking” process, together with a high degree of cleanliness, and provides the conditions necessary for making the high-grade varnish which is used in best-quality paints.



This unit, fabricated by Messrs. L. A. Mitchell Limited of Manchester, consists of a heating vessel called "the Pot", into which the raw materials are charged, a distillation and condensing unit which deals with unwanted by-products, and a blending vessel in which the hot base varnish is blended with the solvents.

Heating is provided by mains frequency induction electric coils at three levels on the pot walls and each band of coils can be operated independently, thus giving flexibility of heating rates. All control is carried out from a push-button console and any set chosen temperature is maintained thermostatically—thus, the element of "witchcraft" in varnish making can now be said to have changed to "switchcraft".

## LINESMEN IN THE MAKING

Learning a new craft. Members of the staff attending a course designed to train labourers as Linesmen's Mates receive instruction at Hoylake. Up the pole (left to right) are Messrs. J. O. Twiss (Rhuddlan Construction Gang), G. Gidman (Instructor, Overhead Lines), and E. W. Edward (Dolgelly Mains).



The Aladdins of Northwich. Left to right: Messrs. A. Robinson (Chargehand), A. Stewart (D.C.E.), A. Pulham (Driver), T. Robinson (Labourer), W. Mecklewright (Driver), D. Cook, F. Taylor and G. Simpson (Labourers). Out of sight, working on the tower wagon, were Messrs. K. Massey (Electrician) and F. Knight (Public Lighting Attendant).

## NEW LAMPS FOR OLD

The commencement of this year's street lighting season in Northwich saw the last of the town's gas lamps replaced by electric lighting. The conversion to electricity and the extension of the street lighting system has been carried out by Manweb in successive sections since Vesting Day, when the local authority had a fairly extensive installation of gas lamps. These were supplemented by about 100 electric lighting points, mostly 60 watt open fittings, with six large suspended fittings in the town centre. The total load then was around 10 kW.

With the completion of this conversion scheme the installation now consists of 1,200 lighting points, of which 320 are Class 'A' with 500 watt tungsten lamps and 42 with 140 watt sodium lamps, having a total load of just over 250 kW.

The electricity supply in the greater part of Northwich town was direct current until a year or so ago, and this accounts for the extensive use of tungsten lighting. During the re-lighting programme, about 250 existing gas lamp standards were converted and adapted for electric lighting while new columns were provided for the remainder. The whole of the work has been carried out by Manweb for the Northwich Urban District Council.

Correspondents — Please remember — the "deadline" for contributions for the November "CONTACT" is  
OCTOBER 18th



A Northwich District staff group. *Left to right (standing):* Messrs. A. W. Kettle (Records Clerk), G. J. C. White (Contracting Clerk), F. Brian (Installation Inspection Engineer), J. R. Rawes (First Assistant D.C.E.), C. Gilbert (District Accounts Clerk), and C. Adams (Foreman Meter Reader). *Sitting in front are* Miss J. E. Carter (Records Clerk) and Miss R. H. Rogerson (Contracting Clerk).



A Commercial Department staff group. *Left to right (standing):* Messrs. M. Whalley (Assistant Consumers' Engineer), D. M. Cathcart (Assistant Consumers' Engineer), Uzi Orbach (Israeli student on exchange visit), F. Green (Contracting Engineer), S. Littlewood (Assistant Consumers' Engineer), N. P. Simes (District Engineering Clerk), and M. Anderson (Engineering Clerk). *Seated are* Messrs. T. W. Cash (First Assistant D.C.E.) and A. Stewart (D.C.E.).

## NORTHWICH NEWSREEL

In the workshops. *Left to right:* Messrs. S. S. Poole (Chargehand Electrician), G. Breeze (Electrician), T. Hackett (Cooker Assembler), W. Prosser (Electrician), J. Wilkinson (Substation Attendant, holding official rat-catcher 'Whisky'), M. L. Hunt (Foreman Electrician), J. R. Griffiths (Electrician) and L. V. Stubbs (Workshop Chargehand).



In the Service Centre. *Left to right:* Mr. J. Webb (Cashier), Mrs. N. Szostek (Cashier), Mr. H. Aimson (Hoover Rep.), Mrs. K. M. Littler (Service Centre Assistant), Mr. W. N. Harding (Sales Rep.) and Mr. D. Pennington (Service Centre Supervisor).  
On the right of the picture are some of the trophies won by the Commercial Staff.





#### MORE NORTHWICH DISTRICT PICTURES

Above (left to right): Staff at Winsford Service Centre. Mr. J. R. Boden (Senior Service Centre Assistant), Mrs. L. M. Winkler (Service Centre Assistant) and Mr. E. Wilding (Electrician).

Right: Mrs. P. M. Blackhurst (seated) and Mrs. M. M. Le Voi (Shorthand Typists).

Below: In the Drawing Office (left to right) are Mr. M. Bates (Assistant), Mr. T. Shaw (Student), Mr. L. Greenall (Assistant), Mr. J. Shallcross (Records Draughtsman), Mrs. J. Littler (Tracer) and Mr. G. Litler (Drawing Office Assistant).



## BREVITIES

### SAVED THE DAY

Letters of thanks are always welcome, and quick action in dealing with a supply failure brought the following letter from a farmer at Higher Heath, Shropshire:—

“Dear Sir,

*I was so pleased with the very prompt service I received from your emergency staff last Saturday evening that I said I would write to thank you for it.*

*I had four cows which had not been milked by me before, and I had no electricity to drive the milking machines, so I was not looking forward to doing this by hand, however, your timely help was very much appreciated.*

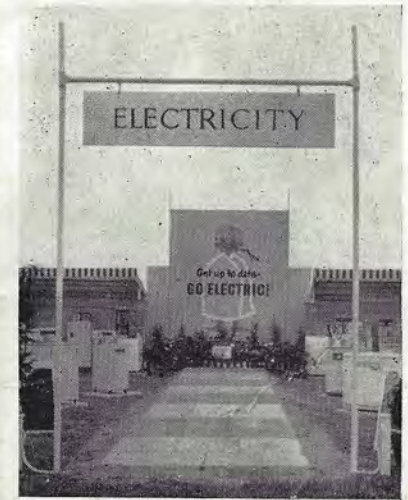
*Very many thanks to you”. (Signed).*

### MIDDLEWICH SHOW

Two prizes—the first in the section for trades stands exhibiting domestic appliances, and the second award for the most attractive trade stand—were won by the Board’s exhibit at the Middlewich and District Agricultural Society Show, held at Kinderton Hall, Middlewich.

The Board’s attractive stand was a joint effort by No. 2 Sub-Area Display Staff, and the Northwich Commercial Staff. A prominent feature was E.D.A.’s Little Boy (chewing a straw,

for agricultural interest), while the display of domestic appliances proved



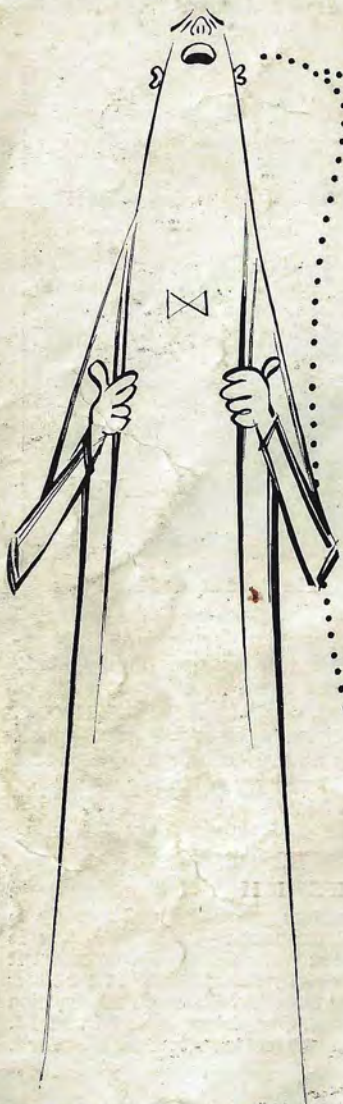
The stand at the Show.

a sure attraction for the ladies. Meanwhile their menfolk were finding plenty to interest them in other sections of the stand, which included power tools, an electrically equipped greenhouse, milking and grinding machinery, and chicks basking in the comfort of radiant heat.

### LEAVES FOR IPSWICH

Friends and colleagues at Board Headquarters gathered round recently to say “Goodbye” to Mr. Peter Blackwell (Instructor—Sales), who was in charge of the Board’s Sales Training School at Wallasey, and who has now left to take up a position with the Eastern Electricity Board. Many of our Sales and Service Centre personnel have benefited from Mr. Blackwell’s instruction while attending courses at the Training School. Our picture shows Mr. M. M. Parker (Board Secretary) making a token presentation to Mr. Blackwell.





# MANWEB 'make a speech' COMPETITION

2nd FEBRUARY, 1961

**MEN**  
1st Prize £10  
2nd Prize £5

**WOMEN**  
1st Prize £10  
2nd Prize £5

**Even if you don't win...you can't lose!**

Winners proceed into  
the National E.D.A. Competition

One day whether you like it or not you'll be asked 'to say a few words'! It happens at weddings, at the club, if you win some prize. Here's a chance to practise on strangers, so why not have a go.

And remember, the man or woman who can make a bit of a speech is the sort who gets on!

Closing Date for entries:  
1st DECEMBER, 1960



You can learn all about the Area and National Competitions and pick up some valuable tips by getting a copy of the E.D.A. booklet 'Public Speaking is Great Fun' from your District Manager's Office, District Commercial Engineer, or fill in this coupon:

To: MANWEB · LOVE LANE · LIVERPOOL 3

Please send me details of the "Make-A-Speech" Competition.

NAME .....

ADDRESS .....



October  
1960

The Staff Magazine  
of the  
Merseyside and North Wales  
Electricity Board

# Contact

FIRST DAY AT WORK (See page 270)

